

# MOTOR SPECIFICATION

PAGE

1 of 2

**M O D E L** : ISG-3230D043

**R A T I O** : 1 : 639

## ELECTRICAL

1. TYPE : SHADED POLE INDUCTION GEARED MOTOR

2. RATED VOLTAGE : AC 230V 50Hz

3. POLES : 2P

4. NO LOAD CHARACTERISTICS

At Geared Motor Ass'y

4-1. CURRENT : 0.24 A ± 15%

4-2. INPUT POWER : 26.0 W ± 15%

4-3. SPEED : 4.5 r/min ± 10%

4-4. STARTING VOLTAGE : 161 V Max.

5. TORQUE CHARACTERISTICS

At Geared Motor Ass'y

5-1. BREAKDOWN TORQUE : 15.5 N·m Min.

5-2. STARTING TORQUE : 11.4 N·m Min.

6. DIELECTRIC STRENGTH

Motor shall withstand a potential of 1500V RMS for 1 minute(1800V RMS for 1 second) duration between coil leads and frame. (Cutoff Current 3mA)

7. INSULATION RESISTANCE

100MΩ minimum at DC 500V MEGA TESTER between winding and frame.



DATE	SIGNATURE	CHANGE CONTENTS		
DESIGNED	CHECKED	APPROVED	MODEL NAME	<b>ISG-3230D043</b> ----- <b>SHADED POLE GEARED MOTOR</b>
2012.07.13 J.K KIM	2012.07.13 C.Y LEE	2012.07.13 B.Y JEONG		
<b>(주) 에스피지</b>			RE- DATE	DRAWING NO
<b>SPG Co., Ltd.</b>			DATE	2012.07.13
				<b>A-146-0972-10</b>

# MOTOR SPECIFICATION

PAGE

2 of 2

## 8. TEMPERATURE RISE

8-1. WINDING : Temperature rise of the winding and the case are 85K(°C) or less respectively measured by the resistance method after rated operation under normal ambient temperature and humidity.

8-2. PROTECTED TYPE : Thermally Protected[120±5°C]

9. CONNECTION : See drawing No. A-146-0972-10

10. LEADS : .250 Male Tab Terminal(Bending Type)

11. TEMPERATURE RANGE : -10°C ~ +40°C (Nonfreezing)

12. HUMIDITY RANGE : RH 85% Max. (Non-condensing)

13. INSULATION CLASS : B class

14. DUTY : Continuous(S1)

## MECHANICAL

1. SHAFT RUN OUT : Measured - mm from shaft end - mm Max.

2. OUTPUT SHAFT ENDPLAY : 0.8mm Max.

3. BEARING : Oil Impregnated Sintered Bearing

4. LUBRICATION : High Temperature Grease & Oil

5. APPEARANCE : To be free from any defects that will adversely affect appearance.

6. COOLING FAN : Fan Ass' y is packed separately

7. MARKING : See drawing No. A-146-0972-10

8. DIMENSION : See drawing No. A-146-0972-10

9. SHAFT POSITION : Horizontal

10. MAXIMUM PERMISSIBLE TORQUE : 33.8N · m



(주) 에스피지

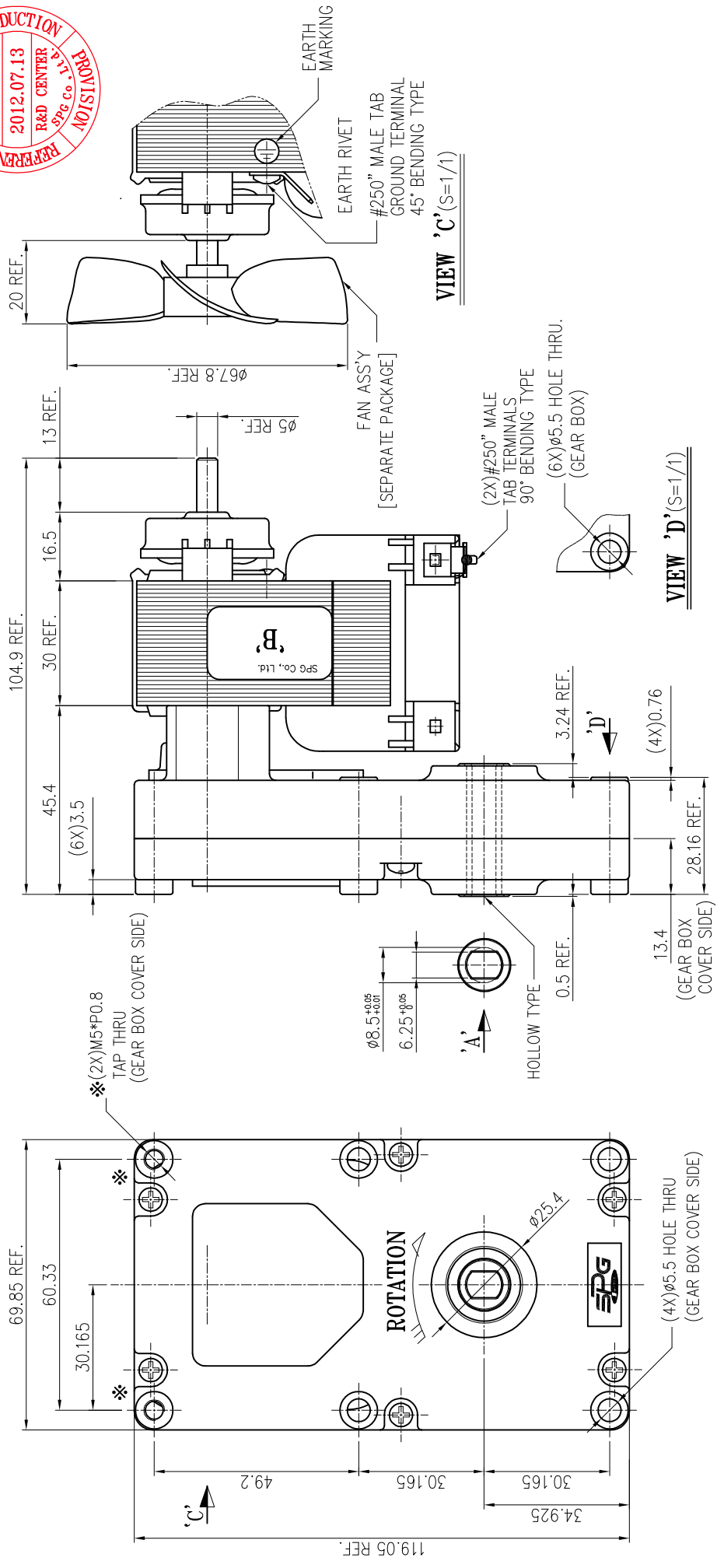
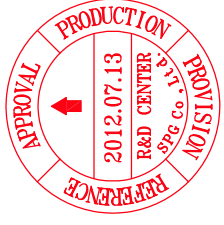
RE-  
DATE

DRAWING NO.

 **SPG Co., Ltd.**

DATE 2012.07.13

A-146-0972-10



**NOTE**

1. OUTPUT SHAFT POSITION : HORIZONTAL
2. ROTATION : VIEWED FROM OUTPUT SHAFT END C.W.(VIEW 'A')
3. END PLAY : 1) ROTOR : 0.8mm Max.  
2) OUTPUT SHAFT : 0.8mm Max.
4. GEAR BOX LUBRICANT : HIGH TEMPERATURE GREASE
5. 'A' GEAR MATERIAL : POM(HELICAL GEAR)
6. NAME PLATE POSITION : SURFACE 'B'
7. FOR MORE SPECIFICATIONS SEE "MOTOR SPECIFICATION SHEET"
8. CUSTOMER IS RESPONSIBLE FOR DETERMINING THAT MOTOR PERFORMANCE IS SUITABLE IN THE APPLICATION

날자 DATE	서명 SIGN	변경 내역 NOTE	변경 이 유 REVISION
재료 MATERIAL	표면 처리 SURFACE FINISH	척도 SCALE	공차 TOLERANCE
제도 DRAWN	검토 CHECK	1/1	+ 1.0
작성 DESIGN	승인 APPR.	GEARED MOTOR ASS'Y ISG-3230D043	
J.H HONG	B.Y JEONG		
2012.07.13	2012.07.13	작성일 DATE	도번 DWG NO.
		2012.07.13	A-146-0972-10

**SPG Co., Ltd.**

(주)에스피지

SPGFP-D04-05

A3(420\*297)